

**REGIONE EMILIA ROMAGNA**

Via dei Mille, 21, 40121 Bologna (BO)  
ITALY

CODICE INFRASTRUTTURA:  
**S.P. n° 253 "S. Vitale"**

PROVINCIA:  
**BOLOGNA**

REGIONE:  
**EMILIA ROMAGNA**

PROGRESSIVE:

COMUNI:

**MAPPATURA ACUSTICA**

ai sensi del d.lgs 194/2005

**--- Lden ---**

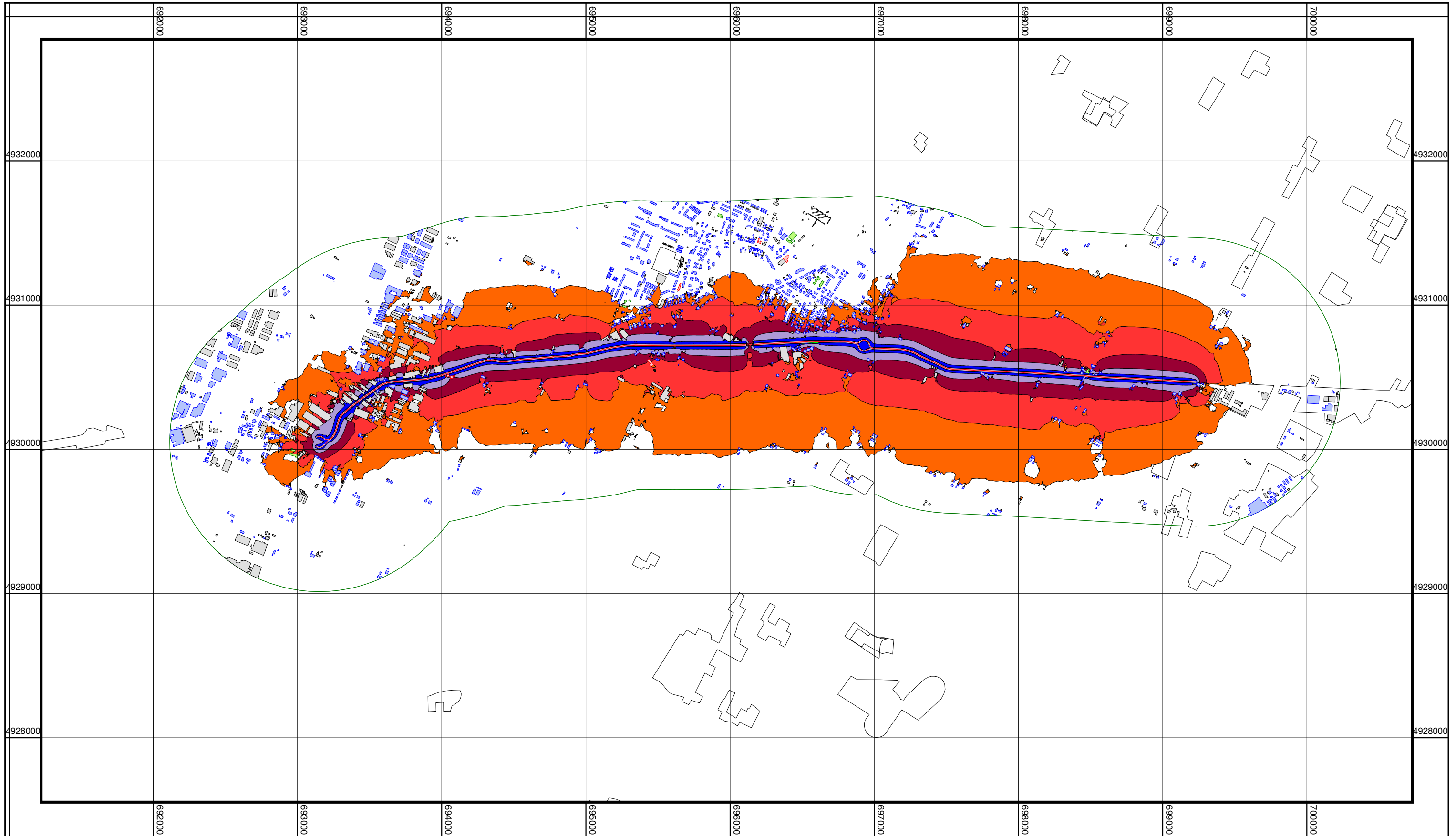
DATA:

REV:






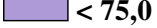
CODICE ELABORATO:  
**END-01**

**Scala 1:25000**

**253**



**Lden [dB(A)]**

55,0 ≤		< 60,0	75,0 ≤		< 80,0
60,0 ≤		< 65,0	80,0 ≤		
65,0 ≤		< 70,0			
70,0 ≤		< 75,0			

**LEGENDA**

	Edificio residenziale		Ospedali - ricoveri
	Altri edifici		Linea d'emissione stradale
	Scuola		Superficie stradale

**D.I.E.N.C.A.**

**Dipartimento di Ingegneria Energetica, Nucleare  
e del Controllo Ambientale**  
Viale Risorgimento, 2, 40136 Bologna (BO)  
ITALY